



700



Pfizer Sandwich:

Breakthroughs and beyond

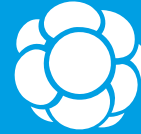
65



65



In 2019, Pfizer celebrated its 65th year at Sandwich. Since opening its doors in 1954 as one of the world's first mass production facilities for the world's first antibiotic, the site has continued to play a pioneering role in world-class science.



There are around 363,000 new cancer cases in the UK every year. That's more than 990 every day*.

(2014-2016) <https://www.cancerresearchuk.org/health-professional/cancer-statistics-for-the-uk#heading=Zero>

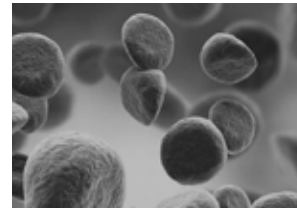


Penicillin changed the face of medicine. Saving millions of lives globally, it is still the most widely used antibiotic in the world today.



4

2018 proved a landmark year for Pfizer Sandwich with four major regulatory filings for cancer medicines. It was an unprecedented achievement that progresses Pfizer's quest to change the trajectory of cancer.



6



Developing medicines for much-needed therapies

Our scientists work in many therapy areas including rare diseases, oncology, anti-infectives, neuroscience and pain.

Pharmaceutical research began at Sandwich in 1957 with just five chemists and one pharmacologist. Today, we have...

700

Scientists, technicians, regulatory and business experts all working towards developing life-saving medicines for patients.



Making a medicine

Our Pharmaceutical Sciences Small Molecule team turns experimental compounds into the different types of formulations for our medicines: solid (tablet, capsule, powder etc.) or liquid.



Unique capabilities

We have unique capabilities, including Pfizer's only automated 'pilot plant', to design, develop and supply the active pharmaceutical ingredient (API) and drug product for clinical trials and beyond.





Regulatory matters

Sandwich is home to members of Pfizer's Global Regulatory group, who creates all the documentation needed to submit Pfizer's medicines for review by Health Authorities around the world.



Genuine or fake?

Our Counterfeit Medicines Laboratory is a centre of excellence for testing suspicious products and is key to Pfizer's campaign in highlighting the dangers of counterfeit medicines.



Industry-leading expertise

Our clinicians, statisticians, clinical pharmacologists and Development Operations experts design, conduct, analyse and report clinical trials.



Safety first

Members of the Worldwide Safety group also work at Sandwich looking at patterns of adverse events reported by patients and reviewing the risk benefit of our products.

Contributing to the global marketplace

In addition to Sandwich being a Research and Development site, we support and contribute to Pfizer's entire global marketed product portfolio.



From high blood pressure and HIV...

Many of Pfizer's breakthrough medicines were discovered at Sandwich and continue to improve the health and quality of life of people with serious infections, chronic diseases, and life-threatening conditions.



The discovery of a novel compound for erectile dysfunction was serendipitous and ground-breaking. The medicine continues to help millions of patients around the world.



...to erectile dysfunction



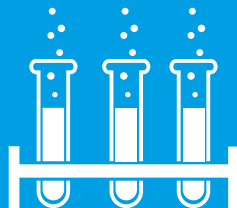
1979 was the year that launched over two decades of award-winning growth for Pfizer Sandwich, culminating in its sixth Queen's Award in 2001 for the discovery and development of a novel compound for the management of erectile dysfunction.



Inspiring a generation

We have 120 Science, Technology, Engineering and Mathematics (STEM) Ambassadors at Sandwich, who reached more than 13,000 students with outstanding science education, learning activities and events in 2017.

Since then we have also seen many brilliant minds embark on our apprenticeship and undergraduate placement schemes.



Our 'Lab in a Box' initiative equips local classrooms with specialist science equipment



Engaging our communities



... and our 'Science in a Box' programme educates pupils on how medicines are developed. It was awarded the prestigious Royal Society of Chemistry's 'Team Inspiration and Industry Award'.

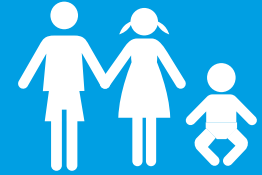
We contributed more than £30,000 in charitable donations within our local communities in 2018. Our colleagues engage in many volunteering activities in the local community for which Pfizer offers five paid days of volunteering leave.



Leading the conversation

We collaborate with organisations across healthcare and scientific communities including universities, hospitals, pharmaceutical companies, and the healthcare industry.

A rich source of creativity and talent, these collaborations help us to find advanced and more efficient ways of turning experimental compounds into new medicines for patients around the world.



“This investment demonstrates Pfizer’s continuing focus on innovation in advanced manufacturing. It highlights our Patient First approach...and further reinforces our commitment to progressing science here in the UK.”

*Julian Thompson,
Pfizer Sandwich Site Head*



In 2017, Pfizer in the UK was involved in 138 research and development collaborations.



Delivering first-in-class science

Pfizer has recently invested £5 million into cutting-edge manufacturing technology at Sandwich to explore innovative ways to make children’s medicines more palatable.

It is the latest in a series of investments in advanced manufacturing since 2018, totalling £36 million, leading to renewed growth and 80 new scientific jobs.



Pfizer Sandwich:

Breakthroughs and beyond

